

Diversity and site-specificity of the oral microflora in the elderly

D. Preza · I. Olsen · T. Willumsen · B. Grinde ·
B. J. Paster

Received: 15 October 2008 / Accepted: 27 March 2009
© Springer-Verlag 2009

Abstract The purpose of the present study was to describe the bacterial diversity in the oral cavity of the elderly without root caries using bacterial microarrays, and to determine the site- and subject-specificity of bacterial colonization. Samples were collected from the tongue dorsum, mucosa of the buccal fold, hard palate, supragingival plaque from sound root surfaces, and subgingival plaque from the same roots. A new 16 S rRNA gene-based microarray method was used for the simultaneous detection of approximately 300 bacterial species. Overall, 175 species and clusters were detected, representing eight phyla. Species belonging to the genera *Streptococcus*, *Veillonella*, and *Fusobacterium* were common in all sites. The number of species per subject varied from 51 to 81. Statistical analyses revealed about 40 species or clusters with signifi-

cant associations with at least one of the sites. The bacterial diversity was highest in the cheek and palate regions. Species typically associated with caries and periodontitis were detected rarely or not at all. The oral bacterial flora of the elderly appears to be diverse, and, to a large extent, site- rather than subject-specific.

Introduction

The microbial flora of the human oral cavity can be highly diverse, encompassing approximately 700 bacterial species [1], of which about half has not yet been grown in vitro. It is, therefore, of interest to characterize the normal flora of the elderly present in different oral sites. Significant site- and subject-specificity has been shown in the microflora of the oral cavity of adults, but not of the elderly [2].

Various bodily functions, such as the physiologic defense mechanisms and the salivary gland secretions, are reduced with age [3, 4]. Colonization of the oral cavity in the elderly with bacteria that may be normally a small part of the oral resident flora has been described in the literature [5, 6]. Other age-related factors that can influence the composition of the oral microflora are dentures, hormones, long-term medication, diet, and reduced oral hygiene [7]. Together, these factors suggest that the oral microflora of the elderly may be different from that of younger individuals.

Most studies characterizing the oral microbiota have focused on young and middle-aged adults or on isolated sites [8, 9, 11]. Only limited information is available on the oral microflora of the elderly, and these studies used culture-based methods of single isolated sites or were limited to a few species [6, 8, 12–14]. The present study employed the Human Oral Microbial Identification Micro-

Electronic supplementary material The online version of this article (doi:10.1007/s10096-009-0743-3) contains supplementary material, which is available to authorized users.

D. Preza (✉) · I. Olsen · B. Grinde
Institute of Oral Biology, Faculty of Dentistry, University of Oslo,
Postbox 1052 Blindern, 0316 Oslo, Norway
e-mail: doritap@odont.uio.no

T. Willumsen
Department of Gerodontology, Faculty of Dentistry,
University of Oslo,
Oslo, Norway

B. Grinde
Norwegian Institute of Public Health,
Oslo, Norway

B. J. Paster
The Forsyth Institute, Department of Molecular Genetics
and Department of Oral Medicine, Infection and Immunity,
Harvard School of Dental Medicine,
Boston, MA, USA

array (HOMIM), which targets about 300 predominant oral bacterial species, including cultivable and not-yet-cultivated phylotypes [15]. The method allowed the investigation of a statistically significant number of samples, i.e., from five different sites in each of 30 subjects. The aim of the study was to determine the site- and subject-specificity of the bacterial profiles in the oral cavity of the elderly.

Materials and methods

Subjects

Thirty elderly subjects (24 females and six males) were included in the study. Eight of the subjects were residents of a long-term care facility (Cathinka Guldberg Centre for the elderly in Oslo, Norway); the other subjects were non-residents. Residence time varied from 17 to 44 months prior to examination. The mean age of the subjects was 83.9 years (range 73–93), and the mean number of teeth was 23 (range 9–36). All of the subjects were examined orally prior to sampling. Smoking, medical record, and drug use were recorded. The subjects were not denture wearers and showed no signs of oral mucosal disease or root caries. They had no antibiotic use up to 1 month prior to sampling. None of the subjects had a history of chronic antibiotic use or was immunocompromised. The subjects did not perform teeth cleaning the evening and the morning before plaque sampling. Eight of the subjects showed local or slight general redness and inflammation of the gingiva. Two of these subjects had periodontal pocket depths of the sampled tooth up to 4 mm, while the pockets were less than 3 mm in the other six. The recession (defined as the distance from the gingival level to the dento-enamel juncture) measured on the sampled site of the root varied from no recession to 7 mm. The study was approved by the local ethics committee.

Samples

Samples from the following five sites of the oral cavity were taken from each subject: tongue dorsum (area of tuberculum impar), buccal fold (mucosal area facing the first molar of the fourth quadrant), hard palate (cross area between the palatine raphe and the second plica palatina transversa), supra- and subgingival plaque from the same root surface. The plaque samples were collected using a Whatman Sterile OmniSwab (Whatman, Community Drive, Sanford, ME), the supragingival plaque samples were taken with a sterile Gracey curette, while the subgingival plaque was collected using sterile paper points (Roeko, Coltene/Whaledent, Langenau, Germany). The samples ($n=150$) were processed as previously described [16]. Sampling was performed by one examiner (D.P.).

DNA extraction and amplification of 16 S rRNA genes

Bacterial DNA was extracted using the QIAamp[®] DNA Mini Kit (Qiagen, GmbH, Hilden, Germany) according to the instructions of the manufacturer. The extracts were stored at -20°C until use. The 16 S rRNA genes were amplified as previously described [17]. Briefly, two separate polymerase chain reaction (PCR) assays were set up, using either forward primer 5'-CCA GAG TTT GAT YMT GGC-3' with reverse primer 5'-GAA GGA GGT GWT CCA RCC GCA -3'; or forward primer 5'-GAC TAG AGT TTG ATY MTG GC-3' with reverse primer 5'-GYT ACC TTG TTA CGA CTT-3'. Two μl of genomic DNA template were added to the reaction mixture (final volume 25 μl) containing 20 pmol of each primer, 40 nmol of deoxytriphosphates, 1.5 mM Mg^{2+} , and 1 U of Platinum High Fidelity *Taq* polymerase (Invitrogen, San Diego, CA). The samples were preheated at 94°C for 2 min, followed by 32 cycles of amplification under the following conditions: 94°C for 30 s, 55°C for 30 s, and 68°C for 1.5 min, with an additional 1 s for each cycle. A final 10-min elongation step at 68°C was added. The results of the PCR amplification were examined by electrophoresis in a 1% agarose gel. The two parallel PCRs were combined and the products purified with QIAquick PCR Purification Kit (Qiagen).

Microarray procedure

The present work used the same microarrays (HOMIM) and the same labeling procedure and hybridization conditions as previously described [17]. Briefly, labeled nucleotide Cy3-dCTP was incorporated during a second, nested PCR. Hybridization was performed overnight at 55°C ; the arrays were washed at room temperature, spun dry, and stored in a dark container until they were scanned by an Axon 4000B microarray scanner. Median pixel intensities for each individual spot were calculated using the analysis function of the GenePix Pro. The median background intensity for each individual feature was subtracted from the median feature intensity, yielding a normalized 'median intensity score' for each individual feature. The generated gpr files were exported to the HOMIM tool website for further analysis (<http://bioinformatics.forsyth.org/homim/>). This analysis allowed the determination of the presence or absence of a particular microorganism based on specific criteria set for that individual spot, and, thus, microbial profile maps for each sample and subsequent cluster analyses. The cluster method used was unweighted pair group method with arithmetic mean (UPGMA) with a correlation distance function. The similarity measurement was calculated with Person's correlation coefficient with values from -1 to $+1$, where 1 indicates identical and -1 indicates complete opposition. The signal intensities were

categorized from 0 to 5. The oral taxon numbers of the bacterial species are provided at <http://www.homd.org/>.

Statistical analyses

When comparing the prevalence of a specific species in subjects, a Cochran test was used to calculate *P*-values. Species showing *P*<0.005 were selected for further analysis. In the selected species, when comparing *P*-values of bacterial species in two different sites in one subject, a sign test was used. A significance level of 5% was chosen. H_0 was defined as “the true prevalences of the two groups are identical.”

Results

General findings

Altogether, 156 species and 19 clusters (i.e., groups of species found by common probes) were detected. The species belonged to eight phylogenetic groups (Table 1). *Firmicutes* was the most common and *Synergistes* the least prevalent phylum; TM7 and *Spirochaetales* were the only phyla that were not detected at all sites.

From 10 to 58 bacterial species and clusters were detected per site (Table 2). When combining the five sites for each subject, between 51 and 81 (mean 59) species were detected. The 20 species that were present in more than two-thirds of the subjects are listed in Table 3. The most commonly detected species were as follows: *Streptococcus oralis* oral taxon 707, *Veillonella atypica* oral taxon 524, *Streptococcus parasanguinis* oral taxon 721, and *Fusobacterium nucleatum* subsp. *polymorphum* oral taxon 202. A complete list of bacterial species detected at each site is supplied in Table S1 in the supplementary material.

Comparison between the five sites

The hierarchical order, by the number of species belonging to different phyla, was the same regardless of site, with one minor exception (*Proteobacteria* were more common than *Bacteroidetes* in subgingival plaque) (Table 1). Although the total number of bacterial species detected was somewhat lower at the tongue dorsum and the hard palate as compared to the other three sites, there were no appreciable differences as to the overall bacterial diversity. The diversity within each subject ranged considerably at all sites. However, at the species level, interesting differences were observed.

A statistical analysis (Cochran test) was performed in order to determine if the prevalence of the 175 species or clusters differed at least in one of the sites. The 43 bacterial species with a *P*<0.005 (see Table S2 in the supplementary material) were selected for further analysis with a sign test. In this test, the 43 bacterial species were tested as significance of association with the five sites comparing pairwise, i.e., 430 significance tests were performed. The 33 species (clusters were not included) for which at least one of the comparisons had a *P*-value below 0.05 were chosen for further analyses (Figs. 1 and 2).

Based on the 5% rule of random finding, 23 false-positive results were expected. The results showed 165 significant results, divided between 43 species and clusters, indicating that the majority of the results are true-positives (Table S2). It is worth noting that most of these species showed *P*-values of 0.005 or less in many comparisons. The tongue had the highest number (16) of significant associations, while the supragingival plaque (1) had the lowest. Species most significantly associated with the tongue dorsum were *Rothia mucilaginosa* oral taxon 681, *Megasphaera micronuciformis* oral taxon 122, and *Prevotella melaninogenica* oral taxon 469/*P. sp.* oral taxon 298, clone

Table 1 Distribution of phyla comprising the detected species and clusters in the different sample categories

Phylogenetic group	Number of species per site					Total
	Tongue dorsum	Buccal fold	Hard palate	Supragingival	Subgingival	
<i>Firmicutes</i>	45	58	58	52	55	72
<i>Bacteroidetes</i>	25	23	19	23	20	37
<i>Proteobacteria</i>	19	19	16	20	23	26
<i>Actinobacteria</i>	6	6	9	15	12	19
<i>Fusobacteria</i>	7	4	3	6	6	10
<i>Spirochaetales</i>	1	1	–	3	4	7
TM7	–	–	–	3	1	3
<i>Synergistes</i>	1	1	1	1	1	1
Total	104	112	106	123	122	175

Table 2 Species diversity per site and per subject

	Tongue dorsum	Buccal fold	Hard palate	Supragingival	Subgingival	Total/subject
Range	13-42	10-58	11-51	10-42	10-42	51-81
Mean	27	27	26	22	26	59

BE073 (Fig. 1). Overall, the genera *Eubacterium* and *Prevotella* showed a significant association with the tongue dorsum. *Lautropia mirabilis* oral taxon 022 was the only species significantly associated with the supragingival plaque, though it was also present in other sites. *Actinomyces odontolyticus* oral taxon 701, *Streptococcus australis* sp. oral taxon 073, strain T1-E5, *Streptococcus infantis* oral taxon 065/*S. sp.* oral taxon 638, clone FN042, *S. parasanguinis* oral taxon 721/*S. sinensis* oral taxon 411, and *Prevotella pallens* taxon 714/*P. sp.* taxon 310, clone DR022 were not found in the supragingival plaque, but were highly significant in at least one of the other sites. *Treponema socranskii* oral taxon 769/*T. sp.* oral taxon 268, clone IL034 was found only in the subgingival plaque, while *P. melaninogenica* oral taxon 469/*P. sp.* oral taxon 298, clone BE073, *R. mucilaginosa* oral taxon 681, and *Clostridiales* sp. oral taxon 085, clone BU014 were missing in this site. Significant species with the highest prevalence in the subgingival plaque were *Kingella oralis* oral taxon 706, *S. intermedius* oral taxon 576/*S. constellatus* oral taxon 644, and *S. anginosus* oral taxon 543/*S. intermedius* oral taxon 644. More detailed information on

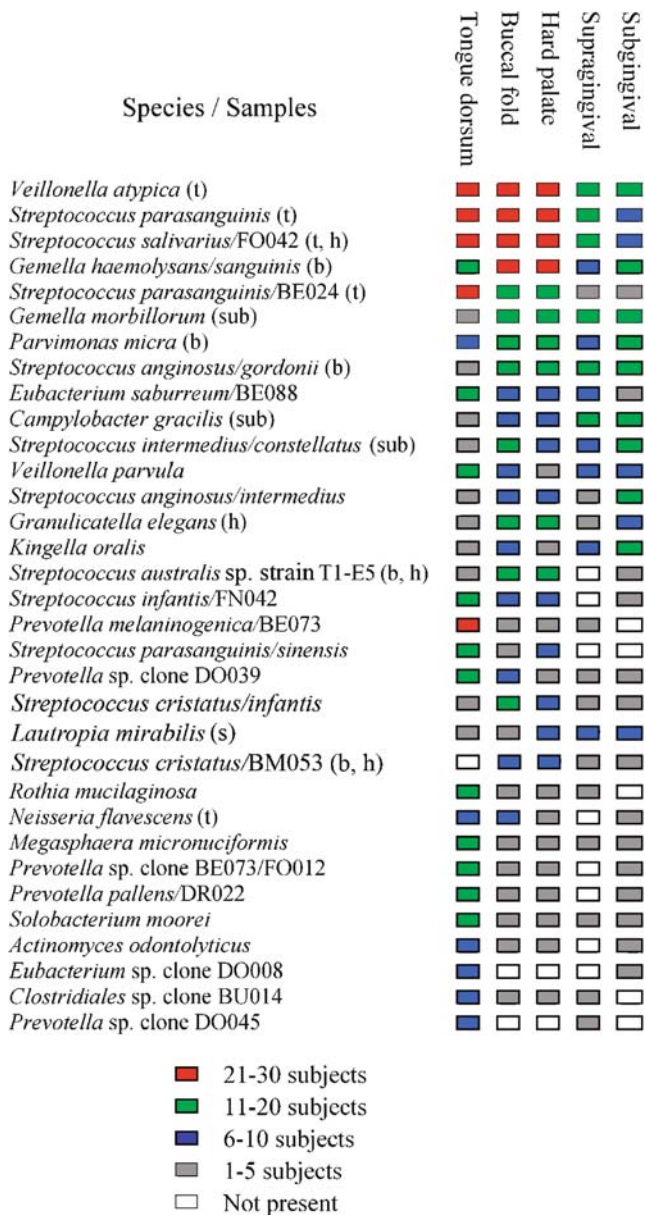
the species distribution within the different sites can be found in the supplementary material (Table S1).

Analyses of the microarray data were performed in an attempt to visualize the differences in relative proportions of bacterial profiles between the five sites. Only species with significant differences in prevalence were included (Fig. 2). The analyses revealed three distinct patterns of sites as follows: the tongue was dominated by species such as *V. atypica* oral taxon 524 and *P. melaninogenica* oral taxon 469/*P. sp.* oral taxon 298, clone BE073. *P. melaninogenica* oral taxon 469, *Eubacterium sulci* oral taxon 467, *Lachnospiraceae* sp. oral taxon 097, clone DO016, and *Legionella pneumophila* were exclusively associated with the tongue dorsum, while *Actinomyces gerencseriae* oral taxon 618 and *Streptococcus cristatus* oral taxon 578/*S. sp.* oral taxon 058, clone BM053 were found in all of the sites except the tongue dorsum (Table S1). The buccal fold and the hard palate showed similarities, such as high prevalences of *V. atypica* oral taxon 524, *S. parasanguinis* oral taxon 721, *S. salivarius* oral taxon 755/*S. sp.* oral taxon 067, clone FO042, *Gemella haemolysans* oral taxon 626/*G. sanguinis*

Table 3 Species with the highest prevalences in subjects regardless of site^a

Species	No. of subjects (n=30)	No. of samples (n=150)
<i>Streptococcus oralis</i> oral taxon 707	30	122
<i>Veillonella atypica</i> oral taxon 524	30	101
<i>Streptococcus parasanguinis</i> oral taxon 721	30	97
<i>Campylobacter rectus/conciscus</i> oral taxon 748/575	30	96
<i>Streptococcus salivarius</i> /FO042 oral taxon 755/067	30	88
<i>Gemella hemolysans/sanguinis</i> oral taxon 626/575	30	82
<i>Fusobacterium nucleatum</i> ss. <i>polymorphum</i> oral taxon 202	29	110
<i>Haemophilus parainfluenzae/A. aphrophilus</i> oral taxon 718/545	27	84
<i>Parvimonas micra</i> oral taxon 111	27	60
<i>Campylobacter gracilis</i> oral taxon 623	27	49
<i>Veillonella parvula</i> oral taxon 161	27	47
<i>Prevotella melaninogenica</i> /BE073 oral taxon 469/298	25	29
<i>Gemella morbillorum</i> oral taxon 046	24	64
<i>Fusobacterium periodonticum</i> oral taxon 201	24	49
<i>Campylobacter conciscus</i> oral taxon 575	24	46
<i>Eubacterium saburreum</i> /DO088 oral taxon 494/082	22	49
<i>Synergistes</i> sp. clone W090 oral taxon 363	22	35
<i>Rothia mucilaginosa</i> oral taxon 681	22	23
<i>Capnocytophaga sputigena</i> oral taxon 775	21	44
<i>Kingella oralis</i> oral taxon 706	21	35

^a Species found in more than two-thirds of the subjects are arranged according to their overall prevalence



(t) Species with highest prevalence in the tongue dorsum.
 (b) Species with highest prevalence in the buccal fold.
 (h) Species with highest prevalence in the hard palate.
 (s) Species with highest prevalence in the supragingival plaque.
 (sub) Species with highest prevalence in the subgingival plaque.

Fig. 1 Species with significant differences as to their prevalence at different sites. Species with P -value<0.05 were included in the figure. The species are arranged according to their overall prevalence

oral taxon 575, *Granulicatella elegans* oral taxon 596, and *S. australis* sp. oral taxon 073, strain T1-E5. In the supra- and subgingival plaque, on the other hand, species such as *G. morbillorum* oral taxon 046 and *Campylobacter gracilis* oral taxon 623 were more prevalent, while *S. parasanguinis* oral taxon 721/*S. sinensis* oral taxon 411 were not found at these two sites.

Individual differences

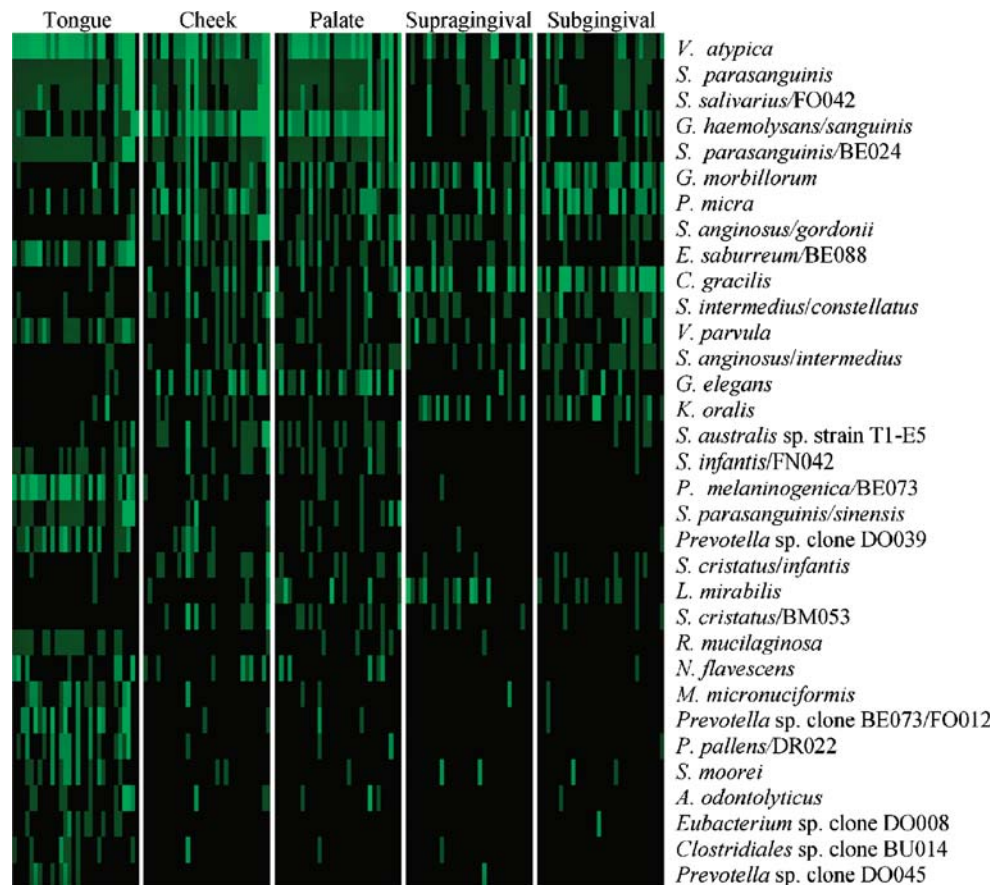
Although the number of species per sample differed considerably (from 10 to 58) (Table 2), overall, the subjects could not be easily categorized as low or high in diversity. Individuals with a low diversity at one site tended to have a more diverse flora at other sites, thus, the total number of species observed differed less (51–81). The diversity appeared to be independent of the number of teeth, signs of gingivitis, medicine use, or place of residence. Moreover, cluster analyses, where the microarray results were divided by persons (all sites combined), rather than by site, did not suggest any rationale for dividing the subjects into subgroups. An attempt to look at differences in dominant species between subjects did not reveal any interesting variations. Some species were observed more often and together than others; *Haemophilus parainfluenzae* oral taxon 718/*Aggregatibacter aphrophilus* oral taxon 545 were found together with *S. oralis* oral taxon 707 in 13 out of 14 subjects, and always accompanied by either *F. nucleatum* subsp. *polymorphum* oral taxon 202 or *Veillonella* cluster II (*V. atypica*/*parvula*/*dispar*/sp. clone BU083/sp. clone AA050) or both. This group of species was associated by either *V. atypica* oral taxon 524, *S. parasanguinis* oral taxon 721 (in one-third of the subjects), *C. rectus* oral taxon 748/*C. concisus* oral taxon 575 (nine subjects), *S. salivarius* oral taxon 755/*S. sp.* oral taxon 067, clone FO042 (seven subjects), or *G. morbillorum* oral taxon 046 (six subjects).

Association with oral and non-oral diseases

All of the subjects had reasonably healthy oral cavities, considering their age. Eight subjects had clinical signs of gingival inflammation. No obvious clustering was observed when comparing the supra- and subgingival microflora in subjects with redness and inflammation of the gums to those without signs of gingivitis. Species commonly associated with periodontitis (*Porphyromonas gingivalis* oral taxon 619, *Treponema denticola* oral taxon 584, *Tannerella forsythia* oral taxon 613) were not detected. Other *Treponema* species were found, but at very low prevalences, in both subjects with and without redness and inflammation of the gums. Similarly, putative cariogenic species were either absent (lactobacilli, *Pseudoramibacter alactolyticus* oral taxon 538, *Atopobium* and *Olsenella* species) or rarely observed (*S. mutans* oral taxon 686, *Bifidobacterium* species).

As to the presence of species typically associated with disease elsewhere in the body, some interesting observations were made. *H. parainfluenzae* oral taxon 718/*A. aphrophilus* oral taxon 545 were found in 90% and *Cardiobacterium hominis* oral taxon 633 in 20% of the subjects. *Pseudomonas* species (cluster I including *Pseu-*

Fig. 2 Bacterial profiles including only significant species between the different sites. The species are listed as in Fig. 1



domonas aeruginosa/pseudoalcaligenes/fluorescens/sp. clone AZ002) were significantly prevalent on the cheek and hard palate (Table S2).

Discussion

The purpose of the present study was to describe the microbial complexity of the oral cavity in the elderly and to determine site- and subject-specificities of the detected bacterial species. A total of 175 species and clusters were detected.

Species of the genera *Veillonella* (particularly *V. atypica* oral taxon 524) and *Streptococcus* were ubiquitous (Table 3, Fig. 1), as was the case in young adults [11]. *S. oralis* oral taxon 707 was, by far, the most prevalent species in the present study. It is recognized as a frequent cause of infections in immunocompromised patients; other streptococci are known to be associated with bacterial endocarditis [18–20]. High prevalences of *F. nucleatum* subsp. *polymorphum* oral taxon 202, *H. parainfluenzae* oral taxon 718/*A. aphrophilus* oral taxon 545, and *Leptotrichia* were also found. *F. nucleatum* subsp. *polymorphum* oral taxon 202 has previously been shown to be associated with healthy root surfaces in old age [16]. Species such as *V. atypica* oral

taxon 524, *S. parasanguinis* oral taxon 721, and *S. salivarius* oral taxon 755/*S. sp.* oral taxon 067, clone FO042 were among the most prevalent species at all sites, but were associated particularly with soft-tissue samples. A high level of lactobacilli has been described as typical for the elderly [6]; however, in the present study, these bacteria were rarely detected. In the elderly, *Lactobacillus* species were commonly detected in carious root surfaces, but not in subjects without root caries [16].

When comparing the different sites sampled, three distinct bacterial patterns could be observed (Table 2, Fig. 2). The tongue dorsum had the most distinct profile, with the highest number of unique and significantly associated species. The papillary structure and the low redox potential of its surface may explain the significant site-specific bacterial association [2]. *P. melaninogenica* oral taxon 469 has long been associated with tongue flora [21]. *R. mucilaginoso* oral taxon 681 and *E. sulcii* oral taxon 467 have been mostly associated with the healthy tongue microflora, while *Fusobacterium periodonticum* oral taxon 201, *Megasphaera micronuciformis* oral taxon 122, and *Solobacterium moorei* oral taxon 678 have been mostly associated with halitosis [1]. These bacterial species were significantly associated with the tongue dorsum in the present study. The second bacterial pattern was observed on

the cheek and hard palate having closely related bacterial profiles with the highest diversities per site per subject. The microflora of the hard palate has previously shown high variations in the number of species isolated, and the bacterial diversity on the cheek and palate epithelium have been reported to be similar [2]. The shedding of the epithelial cells and the shear forces from chewing in the buccal fold and the hard palate [2] may explain the high variation in the bacterial diversity in these sites. The third bacterial pattern was observed in the supra- and subgingival flora with closely related site diversity and number of phyla detected; however, at the species level, the two sites differed somewhat. Some species (*T. socranskii* oral taxon 769, *S. intermedius* oral taxon 576/*S. constellatus* oral taxon 644, *K. oralis* oral taxon 706, *S. anginosus* oral taxon 543/*S. intermedius* oral taxon 644) were significantly associated only with the subgingival plaque.

Though a direct comparison of studies is not possible due to different methodologies, the bacterial profiles in the elderly are more diverse (i.e., have more species) than those of the normal flora of healthy young and middle-aged adults [11]. It has been suggested that age-related changes in the immune response may result in a higher oral bacterial diversity in the elderly [7].

Only subjects with a relatively good oral health, including the absence of root caries, were included in the present study. It is known that root caries have a significant association with poor oral hygiene [22]. Root surfaces appear to be more susceptible to carious attack than enamel surfaces [23, 24]. The absence of root caries suggested, therefore, none or a low coronal caries activity. The bacterial profiles of the supragingival plaque showed a low prevalence, or absence, of species often associated with caries, such as lactobacilli, *S. mutans* oral taxon 686, *Actinomyces*, *Pseudoramibacter alactolyticus* oral taxon 538, *Bifidobacterium*, *Atopobium*, and *Olsenella* species.

Eight of the subjects had signs of gingivitis. However, neither direct inspection of bacterial profiles nor cluster analyses revealed any distinct characteristics of the flora of these subjects (all sites) compared to the rest.

Actinomyces species were commonly found in the supragingival plaque samples of the healthy root surfaces. Members of this genus have been described to be associated with both healthy and carious root surfaces in the literature [10].

H. parainfluenzae oral taxon 718/*A. aphrophilus* oral taxon 545 were among the most prevalent species in the present study at all sites. *Haemophilus* species on the tongue surface have been associated with aspiration pneumonia in the elderly [14]. A compromised immune response may fail to eliminate these species, thus, promoting infection. *H. parainfluenzae* oral taxon 718/*A. aphrophilus* oral taxon 545 and *C. hominis* oral taxon 633 are part of the so-called HACEK group

(*H. parainfluenzae*, *A. aphrophilus* and *A. paraphrophilus*, *Aggregatibacter actinomycetemcomitans*, *C. hominis*, *E. corrodens*, and *Kingella kingae*) because of their common microbiological (fastidious in their nutritional and atmospheric requirements, a long incubation time for growth) features. They may cause infective endocarditis involving native valves and are the most common Gram-negative bacterial causes of endocarditis among people who do not use intravenous drugs [18, 25, 26]. *Pseudomonas* species were significantly associated with the buccal fold and the hard palate in the present study. They have been repeatedly associated with tracheal and bronchial colonization, and nosocomial or aspiration pneumonia [27]. The presence of non-oral species such as *L. pneumophila* (tongue dorsum) was noteworthy because it is usually considered as an airway pathogen and, in rare cases, as a cause of *Legionella* endocarditis [17].

The results presented in this report highlighted the diversity and complexity of the oral bacterial profiles in the elderly. Significant differences between sites were observed, but the subjects could not be grouped by the characteristics of their flora. There was no obvious set of bacterial species that tended to cluster together in comparing the different subjects. Some of the most prevalent site-specific species have been previously associated with systemic diseases.

Acknowledgments We thank Sabah Tariq and particularly Marianne Wenaasen, the Cathinka Guldberg Centre, Oslo, Norway, for the patient management. We acknowledge Susan K. Boches and Sean J. Cotton, the Forsyth Institute, Boston, MA, USA, for their excellent laboratory assistance. Professor Leiv Sandvik is kindly acknowledged for the statistical analysis advice. The study was supported by the Faculty of Dentistry, University of Oslo, Oslo, Norway, and NIH grant DE11443 (B.J.P.).

References

1. Kazor CE, Mitchell PM, Lee AM, Stokes LN, Loesche WJ, Dewhirst FE, Paster BJ (2003) Diversity of bacterial populations on the tongue dorsa of patients with halitosis and healthy patients. *J Clin Microbiol* 41:558–563. doi:10.1128/JCM.41.2.558-563.2003
2. Marsh PD, Martin MV (1992) Oral microbiology, 3rd edn. Chapman & Hall, London
3. Amerongen AV, Veerman EC (2002) Saliva—the defender of the oral cavity. *Oral Dis* 8:12–22. doi:10.1034/j.1601-0825.2002.10816.x
4. Saltzman RL, Peterson PK (1987) Immunodeficiency of the elderly. *Rev Infect Dis* 9:1127–1139
5. Fure S (1998) Five-year incidence of caries, salivary and microbial conditions in 60-, 70- and 80-year-old Swedish individuals. *Caries Res* 32:166–174. doi:10.1159/000016449
6. Percival RS, Challacombe SJ, Marsh PD (1991) Age-related microbiological changes in the salivary and plaque microflora of healthy adults. *J Med Microbiol* 35:5–11
7. Marsh PD, Percival RS (2006) The oral microflora—friend or foe? Can we decide? *Int Dent J* 56:233–239
8. Ohazama J, Motegi E, Nomura M, Miyazaki H, Takane Y, Harazaki M, Yamaguchi H, Ishihara K, Okuda K, Matsuda I (2006) Oral flora

- in independent over 80-year-olds with more than 20 teeth. Bull Tokyo Dent Coll 47:1–4. doi:10.2209/tdcpublication.47.1
9. Paster BJ, Boches SK, Galvin JL, Ericson RE, Lau CN, Levanos VA, Sahasrabudhe A, Dewhirst FE (2001) Bacterial diversity in human subgingival plaque. J Bacteriol 183:3770–3783. doi:10.1128/JB.183.12.3770-3783.2001
 10. Zambon JJ, Kasprzak SA (1995) The microbiology and histopathology of human root caries. Am J Dent 8:323–328
 11. Aas JA, Paster BJ, Stokes LN, Olsen I, Dewhirst FE (2005) Defining the normal bacterial flora of the oral cavity. J Clin Microbiol 43:5721–5732. doi:10.1128/JCM.43.11.5721-5732.2005
 12. Kaklamanos EG, Charalampidou M, Menexes G, Topitsoglou V, Kalfas S (2005) Transient oral microflora in Greeks attending day centres for the elderly and residents in homes for the elderly. Gerodontology 22:158–167. doi:10.1111/j.1741-2358.2005.00069.x
 13. Miura H, Kariyasu M, Yamasaki K, Arai Y, Sumi Y (2005) Relationship between general health status and the change in chewing ability: a longitudinal study of the frail elderly in Japan over a 3-year period. Gerodontology 22:200–205. doi:10.1111/j.1741-2358.2005.00074.x
 14. Sumi Y, Miura H, Nagaya M, Michiwaki Y, Uematsu H (2006) Colonisation on the tongue surface by respiratory pathogens in residents of a nursing home—a pilot study. Gerodontology 23:55–59. doi:10.1111/j.1741-2358.2006.00093.x
 15. Human Oral Microbial Identification Microarray (HOMIM) (2008) Home page at: <http://mim.forsyth.org/>
 16. Preza D, Olsen I, Aas JA, Willumsen T, Grinde B, Paster BJ (2008) Bacterial profiles of root caries in elderly patients. J Clin Microbiol 46:2015–2021. doi:10.1128/JCM.02411-07
 17. Preza D, Olsen I, Willumsen T, Boches SK, Cotton SL, Grinde B, Paster BJ (2008) Microarray analysis of the microflora of root caries in elderly. Eur J Clin Microbiol Infect Dis. Epub ahead of print
 18. Berbari EF, Cockerill FR 3rd, Steckelberg JM (1997) Infective endocarditis due to unusual or fastidious microorganisms. Mayo Clin Proc 72:532–542. doi:10.4065/72.6.532
 19. Li X, Kolltveit KM, Tronstad L, Olsen I (2000) Systemic diseases caused by oral infection. Clin Microbiol Rev 13:547–558. doi:10.1128/CMR.13.4.547-558.2000
 20. Shenep JL (2000) Viridans-group streptococcal infections in immunocompromised hosts. Int J Antimicrob Agents 14:129–135. doi:10.1016/S0924-8579(99)00172-7
 21. Könönen E, Asikainen S, Jousimies-Somer H (1992) The early colonization of gram-negative anaerobic bacteria in edentulous infants. Oral Microbiol Immunol 7:28–31. doi:10.1111/j.1399-302X.1992.tb00016.x
 22. Simons D, Kidd EA, Beighton D (1999) Oral health of elderly occupants in residential homes. Lancet 353:1761. doi:10.1016/S0140-6736(99)01343-4
 23. Ten Cate JM, Larsen MJ, Pearce EIF, Fejerskov O (2008) Chemical interactions between the tooth and oral fluids. In: Fejerskov O, Kidd EAM, Nyvad B, Baelum V (eds) Dental caries, 2nd edn. Blackwell Munksgaard, Oxford, p 224
 24. van Houte J, Lopman J, Kent R (1996) The final pH of bacteria comprising the predominant flora on sound and carious human root and enamel surfaces. J Dent Res 75:1008–1014. doi:10.1177/00220345960750040201
 25. Akhondi H, Rahimi AR (2002) *Haemophilus aphrophilus* endocarditis after tongue piercing. Emerg Infect Dis 8:850–851
 26. Redmond AM, Meiklejohn C, Kidd TJ, Horvath R, Coulter C (2007) Endocarditis after use of tongue scraper. Emerg Infect Dis 13:1440–1441
 27. Niederman MS, Mantovani R, Schoch P, Papas J, Fein AM (1989) Patterns and routes of tracheobronchial colonization in mechanically ventilated patients. The role of nutritional status in colonization of the lower airway by *Pseudomonas* species. Chest 95:155–161. doi:10.1378/chest.95.1.155